

Dialogannahme

ПОДЪЕМНИКИ и ПЛАТФОРМЫ

КАТАЛОГ

Архангельск (8182)63-90-72
Астана (7172)727-132
Астрахань (8512)99-46-04
Барнаул (3852)73-04-60
Белгород (4722)40-23-64
Брянск (4832)59-03-52
Владивосток (423)249-28-31
Волгоград (844)278-03-48
Вологда (8172)26-41-59
Воронеж (473)204-51-73
Екатеринбург (343)384-55-89
Иваново (4932)77-34-06

Ижевск (3412)26-03-58
Иркутск (395)279-98-46
Казань (843)206-01-48
Калининград (4012)72-03-81
Калуга (4842)92-23-67
Кемерово (3842)65-04-62
Киров (8332)68-02-04
Краснодар (861)203-40-90
Красноярск (391)204-63-61
Курск (4712)77-13-04
Липецк (4742)52-20-81

Киргизия (996)312-96-26-47

Магнитогорск (3519)55-03-13
Москва (495)268-04-70
Мурманск (8152)59-64-93
Набережные Челны (8552)20-53-41
Нижний Новгород (831)429-08-12
Новокузнецк (3843)20-46-81
Новосибирск (383)227-86-73
Омск (3812)21-46-40
Орел (4862)44-53-42
Оренбург (3532)37-68-04
Пенза (8412)22-31-16

Россия (495)268-04-70

Пермь (342)205-81-47
Ростов-на-Дону (863)308-18-15
Рязань (4912)46-61-64
Самара (846)206-03-16
Санкт-Петербург (812)309-46-40
Саратов (845)249-38-78
Севастополь (8692)22-31-93
Симферополь (3652)67-13-56
Смоленск (4812)29-41-54
Сочи (862)225-72-31
Ставрополь (8652)20-65-13

Казахстан (772)734-952-31

Сургут (3462)77-98-35
Тверь (4822)63-31-35
Томск (3822)98-41-53
Тула (4872)74-02-29
Тюмень (3452)66-21-18
Ульяновск (8422)24-23-59
Уфа (347)229-48-12
Хабаровск (4212)92-98-04
Челябинск (351)202-03-61
Череповец (8202)49-02-64
Ярославль (4852)69-52-93

<https://beissbarth.nt-rt.ru> || bhp@nt-rt.ru

Scissor Lift VLS 5450A | Above ground / Inground

Large 5 t scissor lift - for wheel alignment | Electrohydraulic | without drive-in ramps

Article number: 1 692 851 312



- Can be installed either inground or above ground
- Lifting height elevated 2100 mm, under floor 1770 mm
- Double cylinder in each scissor mechanism
- Safety latching device
- User manual, log book and CE declaration included in scope of delivery

Perfect for wheel alignment

- Saves unnecessary trips around the vehicle: integrated pneumatic slip plates
- For light vehicles to transporters
- Capacity 5000 kg
- Platform length 5200 mm
- Wheel alignment made according OEM requirements
- Other services can be made on the same working station
- Extra-wide platforms

Strong and sturdy construction

- Full rust protection with cathaphoresis treatment of platforms and frames
- Double hydraulic circuit with 4 hydraulic cylinders for perfect leveling and a better reliability

User friendly command unit

- With press-buttons
- The power unit cabinet can be placed either at the left side or at the right side of the lift
- Quick raising: Motor power 4 kW for 30 second lifting time

All lifts Type VLS 5450 are delivered as standard with guide rails for Jacking beams VLH 320 or VLH 330

Note: Depending on the desired configuration (above ground/inground), the correct type of access ramps must be

ordered! Wheel chocks are included in the scope of delivery of the access ramps. The ramps for above ground installations additionally include the cable canal.

Scissor Lift VLS 5450LA | Above ground / Inground

Large 5 t scissor lift - Tough enough for wheel alignment, from light vehicle till transporter | Electrohydraulic | with integrated wheel free auxiliary lift, 4 t | without drive-in ramps

Article number: 1 692 851 318



- Precision standard for wheel alignment
- Automatic level control
- High grade hydraulic components - Hydraulic synchronization safety system
- Can be installed either inground, or above ground
- Lifting height above ground 2100 mm, inground 1770 mm
- Double cylinder in each scissor mechanism
- Safety latching device
- Elastomer blocks, user manual, log book and CE declaration included in scope of delivery

Perfect for wheel alignment

- Saves unnecessary trips around the vehicle: integrated pneumatic slip plates
- For light vehicle to transporters
- Capacity 5000 kg
- Platform length 5200 mm
- Wheel alignment made according OEM requirements
- Extra-wide platforms

Strong and sturdy construction

- Full rust protection with Cataphoeris treatment of platforms and frames
- Double hydraulic circuit with 4 hydraulic cylinders for perfect leveling and a better reliability

User friendly command unit

- with press-buttons
- The power unit cabinet can be placed either at the left side or at the right side of the lift.
- With integrated wheel free auxiliary lift: - Capacity 4000 kg - Lifting height 565 mm - Platform length 1500 - 1940 mm - incl. 4 rubber lifting pads
- Quick raising function: Motor power 4 kW for 30s lifting time

All lifts Type VLS 5450 are delivered as standard with guide rails for Jacking beams VLH 320 or VLH 330

Note: Depending on the desired configuration (above ground/inground), the correct type of access ramps must be ordered! Wheel chocks are included in the scope of delivery of the access ramps. The ramps for above ground installations additionally include the cable canal.

Scissor Lift VLS 5450LP | Above ground / Inground

Large 5 t scissor lift - for vehicle inspection and reception reception bay | Electrohydraulic | with integrated wheel free auxiliary lift, 4 t and play detector | without drive-in ramps

Article number: 1 692 851 320



- Saves unnecessary trips around the vehicle: integrated pneumatic slip plates
- Hydraulic synchronization safety system
- Lifting time 30 s
- Lifting height above ground 2100 mm, inground 1770 mm
- Sturdy design with overall weight of 2320 kg (inground version)
- Automatic level control
- Double cylinder in each scissor mechanism
- Safety latching device
- Elastomer blocks, user manual, log book and CE declaration included in scope of delivery

Strong and sturdy construction

- Full rust protection with cathaphoresis treatment of platforms and frames
- Double hydraulic circuit with 4 hydraulic cylinders for perfect leveling and a better reliability

User friendly command unit

- with press-buttons
- The power unit cabinet can be placed either at the left side or at the right side of the lift.
- With integrated wheel free auxiliary lift: - Capacity 4000 k - Lifting height 565 mm - Platform length 1500 - 1940 mm - incl. 4 rubber lifting pads Integrated hydraulic play detectors for the front axle (Left and right) - ideal for vehicle-inspection or direct reception
- Quick raising: Motor power 4 kW

LP: Integrated play detector for the front axle (left and right) with hydraulic control for direct vehicle inspection

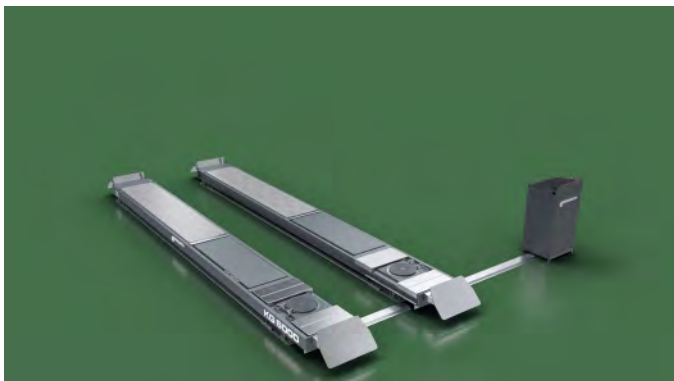
All lifts Type VLS 5450 are delivered as standard with guide rails for Jacking beams VLH 320 or VLH 330

Note: Depending on the desired configuration (above ground/inground), the correct type of access ramps must be ordered! Wheel chocks are included in the scope of delivery of the access ramps. The ramps for above ground installations additionally include the cable canal.

Vertical Scissor Lift VLS 5660A | Above ground / Inground

Electro-hydraulic vertical scissor lift for wheel alignment | 6000mm | 6000kg | without wheel lift

Article number: 1 692 851 352



Optimized for wheel alignment works

- 6m length for measurements from Smart to Sprinter
- Extra wide platforms for easy positioning of the vehicle
- Pre-installed lighting kit for improved visibility under the vehicle
- Integrated middle support ensures a levelled surface at zero position
- Pneumatic lock & unlock rear sliding plates with more than 2800mm in length
- Levelable to fulfill highest accuracy requirements of OEMs

Quality lift for quality services

- Highest corrosion protection – Cathodic electrodeposition coating (CEC) standard for platforms and filling pieces
- Vertical scissor structure allows free access from all sides of the lift
- Integrated alignment turntable recess - Stainless steel surface with extra sealing compound to avoid corrosions - Standard supply of all filling pieces to fully cover the turntable recess - Works with all common turntables with 50mm height
- High quality control console made from metal with pre-mounted hydraulic components to ensure quick and easy installation. Can be placed to the left and right of the lift
- Contrary to conventional scissor lift structures, vertical scissor lifts platforms are supported closer to the wheel contact points and ensure more stability in raised conditions. The VLS5660 is therefore the optimal choice to achieve best alignment results and straight steering wheels
- Automatic drive-off protection that allows use of complete platform length
- Enforced platforms with levelable alignment positions: - Levelable at zero position: Yes - Lowest raised alignment position: 1038mm - Highest raised alignment position: 1972mm

Quick & easy installation

- Suited for above floor and inground installations
- Height of platforms only 295mm
- Schneider air pressure connector included as standard

Engineered and produced in compliance with the following directives:

- European directives: 2014/30/UE, 2006/42/CE, 2014/35/UE
- Technical standard: EN 1493:2010, EN ISO 12100:2010
- Electronics: UNI EN 60204-1

Note: Depending on the type of installation (above floor or inground) the necessary drive-on ramps need to be purchased separately. Bolts & dowels for installation are not included.

Vertical Scissor Lift VLS 5660LA | Above ground / Inground

Electro-hydraulic vertical scissor lift for wheel alignment | 6000mm | 6000kg | with wheel lift 3500kg

Article number: 1 692 851 358



Optimized for wheel alignment works

- 6m length for measurements from Smart to Sprinter
- Extra wide platforms for easy positioning of the vehicle
- Pre-installed lighting kit for improved visibility under the vehicle
- Integrated middle support ensures a levelled surface at zero position
- Pneumatic lock & unlock rear sliding plates with more than 2800mm in length
- Levelable to fulfill highest accuracy requirements of OEMs

Quality lift for quality services

- Highest corrosion protection – Cathodic electrodeposition coating (CEC) standard for platforms and filling pieces
- Vertical scissor structure allows free access from all sides of the lift
- Integrated alignment turntable recess - Stainless steel surface with extra sealing compound to avoid corrosions - Standard supply of all filling pieces to fully cover the turntable recess - Works with all common turntables with 50mm height
- High quality control console made from metal with pre-mounted hydraulic components to ensure quick and easy installation. Can be placed to the left and right of the lift
- Contrary to conventional scissor lift structures, vertical scissor lifts platforms are supported closer to the wheel contact points and ensure more stability in raised conditions. The VLS5660 is therefore the optimal choice to achieve best alignment results and straight steering wheels
- Automatic drive-off protection that allows use of complete platform length
- Enforced platforms with levelable alignment positions: - Levelable at zero position: Yes - Lowest raised alignment position: 1038mm - Highest raised alignment position: 1972mm

Quick & easy installation

- Suited for above floor and inground installations
- Height of platforms only 295mm
- Schneider air pressure connector included as standard

Engineered and produced in compliance with the following directives:

- European directives: 2014/30/UE, 2006/42/CE, 2014/35/UE
- Technical standard: EN 1493:2010, EN ISO 12100:2010
- Electronics: UNI EN 60204-1

LA: With integrated wheel lift with 3500kg capacity and rubber pads

Note: Depending on the type of installation (above floor or inground) the necessary drive-on ramps need to be purchased separately. Bolts & dowels for installation are not included.

4-Post Lift VLH 4740LA

Electrohydraulic 4-post precision lift for cars and vans up to 4000 kg | with integrated auxiliary lift | Platform length 4800 mm

Article number: 1 692 841 882



- High precision mechanical and hydraulic systems
- Integrated wheel free scissor lift
- Ideal workstation for wheel alignment
- Low access height of only 190 mm (including fillers for wheel alignment)
- Optionally: additional 2 t jacking beam
- High precision locking bars
- Pneumatic release of platforms (locking pawls), automatically controlled
- Perfect working station for Beissbarth CCD, as well as Easy 3D+ devices
- Pre-drilled for Easy 3D+

Perfect for wheel alignment

- High quality lift offering long service life, low maintenance requirement, simple and user-friendly user interface, with many useful possibilities : vehicle reception, inspection, repair and wheel alignment, etc.
- Beissbarth 4-post lifts are first choice for any repairs to be performed on light vehicles, transporters and commercial vehicles.

The perfect lift for transporter and commercial vehicles

- Integrated wheel free scissor lift, with lifting capacity 3,5 t: features a platform extension to adapt the lift to the various wheel bases
- Complete equipment for the wheel alignment, including front recesses for turntable and long rear side slip plates. Note : Turntables are not in the scope of delivery
- Turntable can be positioned as required in the front recesses, and filler are placed in the gaps
- Long platforms (length: 4,80 m) for vehicles with long wheel bases
- Made in Italy

Scope of delivery:

- Lift complete
- 4 x Lifting pads H = 20 mm
- 2 x Drive-in ramps (above floor)
- 2 x Wheel stopper (at the front)

Note : Turntables are not in the scope of delivery Certificates: CE



4-Post Lift VLH 4850LA

Electrohydraulic 4-post precision lift for cars and vans up to 5000 kg | with integrated auxiliary lift | Platform length 5200 mm

Article number: 1 692 841 903



- High precision mechanical and hydraulic systems
- Integrated wheel free scissor lift
- Ideal workstation for wheel alignment
- Low access height of only 190 mm (including fillers for wheel alignment)
- Optionally: additional 2 t or 3,0 t jacking beam
- High precision locking bars
- Pneumatic release of platforms (locking pawls), automatically controlled
- Perfect working station for Beissbarth CCD, Easy 3D+ and TOUCHLESS
- Pre-drilled for Easy 3D+ and TOUCHLESS

Perfect for wheel alignment

- High quality lift offering long service life, low maintenance requirement, simple and user-friendly user interface, with many useful possibilities: vehicle reception, inspection, repair and wheel alignment, etc.
- Beissbarth 4-post lifts are first choice for any repairs to be performed on light vehicles, transporters and commercial vehicles.

The perfect lift for transporter and commercial vehicles

- Integrated wheel free scissor lift, with lifting capacity 4 t: features a platform extension to adapt the lift to the various wheel bases
- Complete equipment for the wheel alignment, including front recesses for turntable and long rear side slip plates
- Turntable can be positioned as required in the front recesses, and filler are placed in the gaps
- Long platforms (length: 5,20 m) for vehicles with long wheel bases
- Made in Italy

Scope of delivery:

- Lift complete
- 4 x Lifting pads H = 20 mm
- 2 x Drive-in ramps (above floor)
- 2 x Wheel stopper (at the front)

Note : Turntables are not in the scope of delivery. Certificates: CE



Levelable test bay LTB 100

For headlight adjusting at a test bay without lift | Complies with German PTI directive and OE specifications

Article number: 1 692 100 030



- Your test bay for headlight testing - Levelled according to the German PTI directive - In line with the guideline
- Ground-based solution as a leveled alternative to lifts (economical, space-saving, maintenance-free)
- Practical retrofit solution for uneven workshop floors
- Particularly suitable for installation on workshop pits
- Modular design
- Drive-through solutions for vehicle check-in (option)
- Compensation and fine adjustment by means of 4 wheel set-up elements (4-meter version)
- Robust thanks to KTL powder coating
- Wheel alignment checks for wheelbases up to 4325 mm (with extension)

LTB 100: The right modules for your workshop

- Expandable by LTB modules e.g. - to a system length of 6 m (standard 4 m) for wheelbases from 1810 - 4325 mm - with drive-on ramp as a drive-through solution - for wheel alignment from small cars to vans

Scissor Lifts



Scissor Lift VLS 5450A | Above ground / Inground

Article number: 1 692 851 312



Scissor Lift VLS 5450LA | Above ground / Inground

Article number: 1 692 851 318



Scissor Lift VLS 5450LP | Above ground / Inground

Article number: 1 692 851 320



Vertical Scissor Lift VLS 5660A | Above ground / Inground

Article number: 1 692 851 352



Vertical Scissor Lift VLS 5660LA | Above ground / Inground

Article number: 1 692 851 358

4-Post Lifts



4-Post Lift VLH 4740LA

Article number: 1 692 841 882



4-Post Lift VLH 4850LA

Article number: 1 692 841 903

Levelable test bays



Levelable test bay LTB 100

Article number: 1 692 100 030



КАТАЛОГ ПОДЪЕМНИКОВ и ПЛАТФОРМ

Архангельск (8182)63-90-72
Астана (7172)727-132
Астрахань (8512)99-46-04
Барнаул (3852)73-04-60
Белгород (4722)40-23-64
Брянск (4832)59-03-52
Владивосток (423)249-28-31
Волгоград (844)278-03-48
Вологда (8172)26-41-59
Воронеж (473)204-51-73
Екатеринбург (343)384-55-89
Иваново (4932)77-34-06

Ижевск (3412)26-03-58
Иркутск (395)279-98-46
Казань (843)206-01-48
Калининград (4012)72-03-81
Калуга (4842)92-23-67
Кемерово (3842)65-04-62
Киров (8332)68-02-04
Краснодар (861)203-40-90
Красноярск (391)204-63-61
Курск (4712)77-13-04
Липецк (4742)52-20-81

Киргизия (996)312-96-26-47

Магнитогорск (3519)55-03-13
Москва (495)268-04-70
Мурманск (8152)59-64-93
Набережные Челны (8552)20-53-41
Нижний Новгород (831)429-08-12
Новокузнецк (3843)20-46-81
Новосибирск (383)227-86-73
Омск (3812)21-46-40
Орел (4862)44-53-42
Оренбург (3532)37-68-04
Пенза (8412)22-31-16

Россия (495)268-04-70

Пермь (342)205-81-47
Ростов-на-Дону (863)308-18-15
Рязань (4912)46-61-64
Самара (846)206-03-16
Санкт-Петербург (812)309-46-40
Саратов (845)249-38-78
Севастополь (8692)22-31-93
Симферополь (3652)67-13-56
Смоленск (4812)29-41-54
Сочи (862)225-72-31
Ставрополь (8652)20-65-13

Казахстан (772)734-952-31

Сургут (3462)77-98-35
Тверь (4822)63-31-35
Томск (3822)98-41-53
Тула (4872)74-02-29
Тюмень (3452)66-21-18
Ульяновск (8422)24-23-59
Уфа (347)229-48-12
Хабаровск (4212)92-98-04
Челябинск (351)202-03-61
Череповец (8202)49-02-64
Ярославль (4852)69-52-93

<https://beissbarth.nt-rt.ru> || bhp@nt-rt.ru